



HAL
open science

Bushfire in Fiherenana and Onilahy Watersheds (SW Madagascar)

Laura Champin, Aude Nuscia Taïbi, Aziz Ballouche

► **To cite this version:**

Laura Champin, Aude Nuscia Taïbi, Aziz Ballouche. Bushfire in Fiherenana and Onilahy Watersheds (SW Madagascar). European Geosciences Union 2019, Apr 2019, Vienne, Austria. 2019. hal-02515998

HAL Id: hal-02515998

<https://univ-angers.hal.science/hal-02515998v1>

Submitted on 23 Mar 2020

HAL is a multi-disciplinary open access archive for the deposit and dissemination of scientific research documents, whether they are published or not. The documents may come from teaching and research institutions in France or abroad, or from public or private research centers.

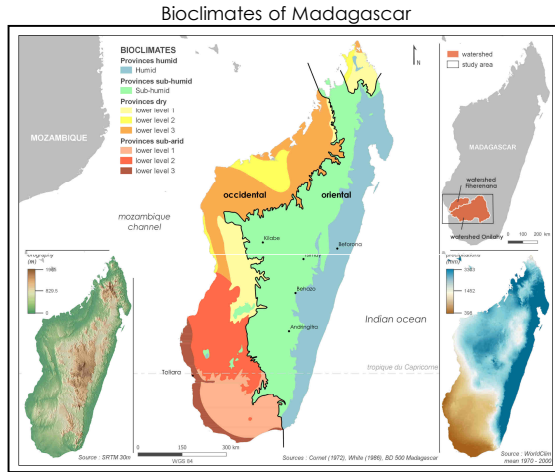
L'archive ouverte pluridisciplinaire **HAL**, est destinée au dépôt et à la diffusion de documents scientifiques de niveau recherche, publiés ou non, émanant des établissements d'enseignement et de recherche français ou étrangers, des laboratoires publics ou privés.

BUSHFIRE

Fiherenana and Onilahy Watersheds (SW Madagascar)

Fires detected at earth scale, are mainly located in the intertropical zone (Cochrane, 2009). Madagascar is an interesting study area to analyse this phenomenon, offering large diversity of bioclimates (A).

01



In Madagascar, fire practice is legally prohibited, since considered as the main agent of vegetation degradation (Kull, 2002). However, there are controversial issues about their causes (natural or anthropic) and consequences (factor of degradation or not).

OBJECTIVES and METHODOLOGY

How is it burning

- Heatmaps with MODIS data (active fires and burned areas (2001-2016))
- Different geographical scales of analysis

When is it burning

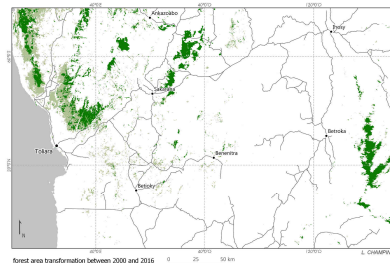
- Calculation of fire return rate (2001-2016)

What is burning

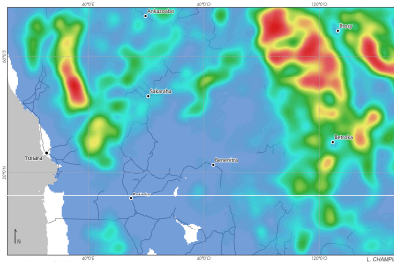
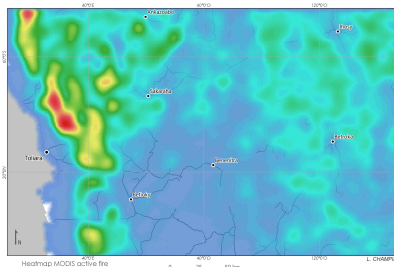
- Intact Forest Landscapes (IFL) method from Laestadius (2012) using MODIS VCF (Vegetation Continuous Fields)
- Typology of plant formations (Forest or savanna, open or closed)

Why is it burning

- Land cover and land use
- Population uses and practices

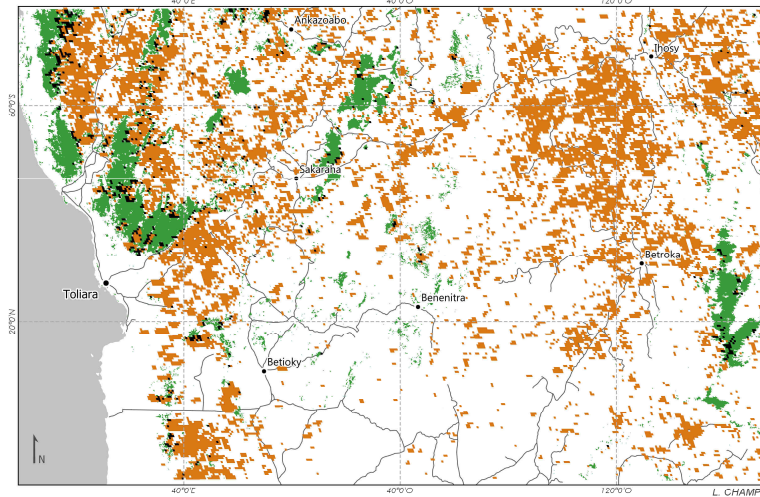


Forest transformation, IFL methode



Identification of three FIRE patterns

- Type 1, few active fires for large areas burned
- Type 2, a lot of active fires detected but few or no burned areas
- Type 3, when both criteria are met, fires regularly started and burn like a patchwork.



04
Legend: Non forest burned area (orange), Burned forest (black), Non burned forest (green).
Sources: MODIS, MCD14DL, MOD14A2, MYD14A2, VCF, 2004

03

Confusions between closed vegetation formations (Deciduous dry forest, xerophytic thicket vegetation, "Tapia" forest) with different fire behaviour

Confusions due to spatial resolution, reducing the forest areas. Complex land uses are not identified in savannas

Need of temporal, frequencies and interannual variability analysis to specify fire trajectories

LIMITS

PERSPECTIVES

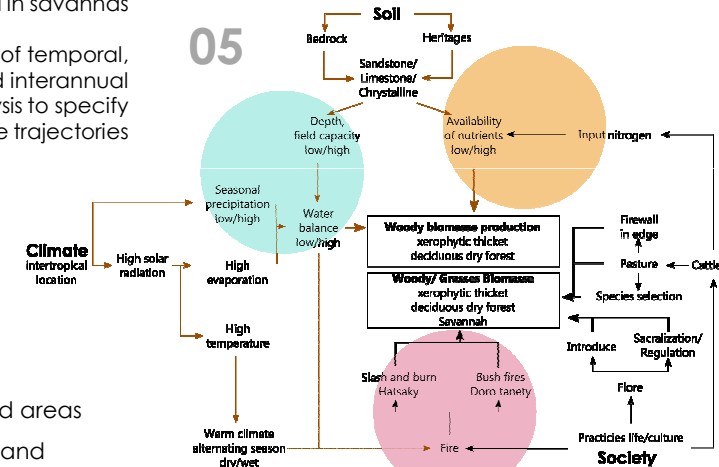
Precise definition of vegetation formations concerned by fires and how they are affected

Remote Sensing by spectral approach with Landsat images

Spatial evolution analysis of burned areas, size and number of patches (Fragstat), with VIIRS images

Interannual frequencies of fire returns analysis to develop **fire patterns**, using **modelling tools** (SAGA)

05



Drivers of fire predispositions and occurrence



"Forest precede fire, not move back due to fires"