



Matrix-Free Laser Desorption Ionization Mass Spectrometry as an Efficient Tool for the Rapid Detection of Opiates in Crude Extracts of *Papaver somniferum*

Michaela Skopikova, Masahiro Hashimoto, Pascal Richomme, Andreas Schinkovitz

► To cite this version:

Michaela Skopikova, Masahiro Hashimoto, Pascal Richomme, Andreas Schinkovitz. Matrix-Free Laser Desorption Ionization Mass Spectrometry as an Efficient Tool for the Rapid Detection of Opiates in Crude Extracts of *Papaver somniferum*. *Journal of Agricultural and Food Chemistry*, 2020, 68 (3), pp.884-891. 10.1021/acs.jafc.9b05153 . hal-02452615

HAL Id: hal-02452615

<https://univ-angers.hal.science/hal-02452615>

Submitted on 23 Sep 2022

HAL is a multi-disciplinary open access archive for the deposit and dissemination of scientific research documents, whether they are published or not. The documents may come from teaching and research institutions in France or abroad, or from public or private research centers.

L'archive ouverte pluridisciplinaire **HAL**, est destinée au dépôt et à la diffusion de documents scientifiques de niveau recherche, publiés ou non, émanant des établissements d'enseignement et de recherche français ou étrangers, des laboratoires publics ou privés.

1 **Matrix free laser desorption ionization mass spectrometry as an efficient tool for the**
2 **rapid detection of opiates from crude extracts of *Papaver somniferum***

3 Michaela Skopikova,[†] Masahiro Hashimoto,[‡] Pascal Richomme,[†] Andreas Schinkovitz,^{*†}

4 [†]EA921, University of Angers, SFR QUASAV, Faculty of Health Sciences, Department of
5 Pharmacy, 16 Bd Daviers, 49045 Angers cedex 01, France

6 [‡]JEOL Europe SAS, Allée de Giverny, 78290, Croissy-sur-Seine, France

ABSTRACT

Having a long history of traditional medicinal applications, *Papaver somniferum* is also known as a source of various pharmacologically highly active opiates. Consequently, their detection from plant extracts is an important analytical task and generally addressed by methods of GC and LC-MS. However, opiates do also show structural similarities to matrix molecules used in matrix assisted laser desorption ionization and may therefore ionize upon simple laser irradiation. Following this analytical approach, the present work thoroughly evaluated the direct detection of opiates by matrix free laser desorption ionization (LDI) from crude extracts of *P. somniferum*. The method facilitated the identification of ten reported opiates by their molecular formulae without any chromatographic pre-purification. Moreover a principal compound analysis based on LDI-MS data permitted the correct grouping of all extracts according to their inherent chemistry. Overall these results highlight the promising potential of LDI-MS for the swift detection of opiates from complex mixtures.

KEYWORDS: opiates detection, *Papaver somniferum*, LDI-MS, LC-MS, PCA

INTRODUCTION:

Papaver somniferum L. (Papaveraceae), commonly known as opium poppy, is a globally cultivated medicinal plant and important source of many pharmacologically active alkaloids such as codeine, thebaine, noscapine papaverine and morphine.¹ Exhibiting strong effects on the central nervous system, some of these opiates are used as analgesic, antitussive and antispasmodic medicines.²⁻⁴ Contrary to capsules, seeds of *P. somniferum* do not contain any latex or notable amounts of alkaloids and are a popular food commodity in Central and Eastern Europe. However, opiate contamination of seeds caused by insect damage and bad harvesting practices is a major concern recently highlighted by European food safety authorities.¹ Consequently, the rapid detection and chemical identification of opiates from complex plant matrices is an important issue for food safety and generally addressed by methods of HPLC-DAD, LC-MS or GC-MS.⁵⁻⁹ Any of these methods represent powerful analytical tools however, very little is known about opium alkaloids in the context of laser desorption ionization (LDI). Some of the very few reports describe isoquinolines like 3-aminoquinoline and 1-hydroxyisochinolin as working matrices in matrix assisted laser desorption ionization (MALDI).¹⁰⁻¹¹ As many opiates actually share close structural similarities with these compounds it is reasonable to assume that they should ionize upon simple laser irradiation and without matrix support. With this in mind, the present study thoroughly evaluated the potential of LDI-MS for the direct detection of morphinan and benzyloquinoline alkaloids from crude methanolic capsule extracts of *P. somniferum* (I). Moreover results were systematically compared with concurrently performed LC-MS analyses (II). Eventually, a principal component analysis (PCA) verifying whether sample material could be statistically differentiated based on LDI-MS data was conducted (III).

MATERIAL AND METHODS:

Plant Material and Extraction.

Voucher samples from five different batches of pulverized capsules of *P. somniferum* were collected at a confidential breeding farm and provided by a private institute that wants to remain anonymous. Reference specimens of each sample are kept at the institute of SONAS. Approximately forty milligrams of powdered plant material were mixed with 1550 μ L analytical grade MeOH (Carlo Erba Reagents, Val de Reuil, France) and sonicated for 20 min. The suspension was then centrifuged for 10 min at 14800 rpm and 800 μ L of the supernatant were recovered. Next 800 μ L of fresh MeOH were added to the plant material and the extraction was repeated. Combined supernatants were dried under nitrogen yielding 4-6 mg dried extract per sample. Detailed information indicating exact weights of sample and plant material is given in Table S1 (Supplementary Information).

Laser Desorption Ionization Mass Spectrometry. Low-resolution (LR), LDI-MS experiments were carried out on a Bruker Biflex III time of flight (TOF) mass spectrometer (Bruker Daltonik, Bremen, Germany), equipped with a 337 nm pulsed nitrogen laser (model VSL-337i, Laser Sciences Inc., Boston, MA, USA). Samples were analyzed in the reflectron positive mode, within a mass range of 40-2000 Da. Acceleration voltage was set to 19 kV, pulse ion extraction was 200 ns, and laser frequency was 5 Hz. Laser energy was individually adapted to sample requirements and in the range of 80-85%. Stock solutions of extracts poppy were prepared in MeOH at 20 mg/ml before being diluted to 10 mg/mL with a solution comprising MeOH and formic acid (Acros organics, Geel, Belgium) (99:1, v/v). Finally, 0.5 μ L were deposited in quintuplicates on a MALDI plate (ground steel, MTP 384 Bruker Daltonics, Bremen, Germany). Data were acquired in manual and automatic mode. The latter facilitated an unbiased operator independent data acquisition, which was essential for consecutively performed PCA. In automatic mode, 300 single spectra from 30 random

locations (10 laser shots each) were acquired and summed for each sample deposition spot. Spectra were processed by FlexAnalysis 2.0 (Bruker Daltonik, Bremen, Germany).

High-resolution (HR) experiments were performed on a Spiral-TOFTM MALDI TOF/TOF mass spectrometer (Jeol LTd., Tokyo, Japan) equipped with a pulsed laser operating at 349 nm. Experiments were performed in the positive spiral mode within mass range of 100-1000 Da. Acceleration voltage was set to 20 kV, laser frequency was 250 Hz and laser power was 59%. Signals exhibiting a signal to noise ratio (S/N) of less than ten were considered not detected. Exported spectra were processed by mMass 5.5.0 a freeware by Martin Strohm.¹²

HPLC-ESI-MS. Experiments were performed on a Trap Esquire 3000+ instrument (Bruker, Bremen, Germany) equipped with ESI/APCI Ion Trap as well as a UV-VIS wavelength detector. Instrument parameters and experimental conditions were as follows: Collision gas, He; collision energy amplitude, 1.0 V; nebulizer and drying gas, N₂, 7 L/min; pressure of nebulizer gas, 20 psi; dry temperature, 300 °C; flow rate, 0.5 mL/min; solvent split ratio 1:9; scan range, m/z 20–1000. In addition absorption chromatograms were acquired at 230 and 280 nm. Chromatographic separation was performed according to a previously published protocol with some modifications.⁷ Experiments were conducted on a Gemini C₁₈ column (3µm, 110 Å, 150 x 4.6 mm, Phenomenex, Le Pecq, France) protected by a pre-column security guard cartridge C₁₈ (4 x 3 mm i.d.) from the same company. The mobile phase contained a solution of ammonium bicarbonate (Servilab, Le Mans, France) at 20 mM adjusted to pH 9.0 by ammonium hydroxide (Acros organics, Geel, Belgium) (solvent A), as well as LC-MS grade MeOH (Honeywell, Seelze, Germany) comprising 5% of solvent A (solvent B). Gradient conditions were as follows: 40% B (0-1 min), 40-100% B (1-30 min), 100% B (30-42 min). Signals exhibiting a S/N<10 in MS, as well as less than 0.03 mAU in UV were considered not detected.

Data Processing and Principal Component Analysis. Data from LR LDI-MS experiments were processed by FlexAnalysis 2.0 (Bruker Daltonik, Bremen, Germany) and mMass 5.5.0 (Martin Strohalm, Czech Republic)¹². Principal component analysis (PCA) was performed on Origin Pro (OriginLab Cooperation, Northampton, MA, USA), using the Principal Component Analysis for Spectroscopy software extension. Before conducting PCA, all LDI-MS spectra were normalized to the base peak. A covariance analysis was performed and the number of extracted components was two.

RESULTS AND DISCUSSION:

Preceding the current work, the concept of direct LDI-MS was successfully applied for the analysis of complex mixtures of phenolic compounds.¹³ Following the same methodological approach, poppy extracts were first analyzed by LR LDI-MS (Biflex III, Bruker). These experiments suggested the presence of ten reported opiates, namely morphine (**1**), oripavine (**2**), codeine (**3**), thebaine (**4**), corytuberine (**5**), reticuline (**6**) papaverine (**7**), norlaudanosiine (**8**) and/or its constitutional isomer codamine, as well as laudanosiine (**9**) and noscapine (**10**) (Figure 1 and 2).^{1, 14-15} Their molecular formulae were then confirmed by HR-LDI-MS (Table 1). It should be noted that norlaudanosiine and codamine are both reported constituents of *P. somniferum*,¹⁴ but, as constitutional isomersn cannot be distinguished by their quasi-molecular ion signals. Overall results from LDI-MS revealed a considerable chemical diversity within the analyzed samples, suggesting that the method may provide a valuable tool for discriminative analyses of complex mixtures of alkaloids. This aspect will be discussed in detail later on in the manuscript.

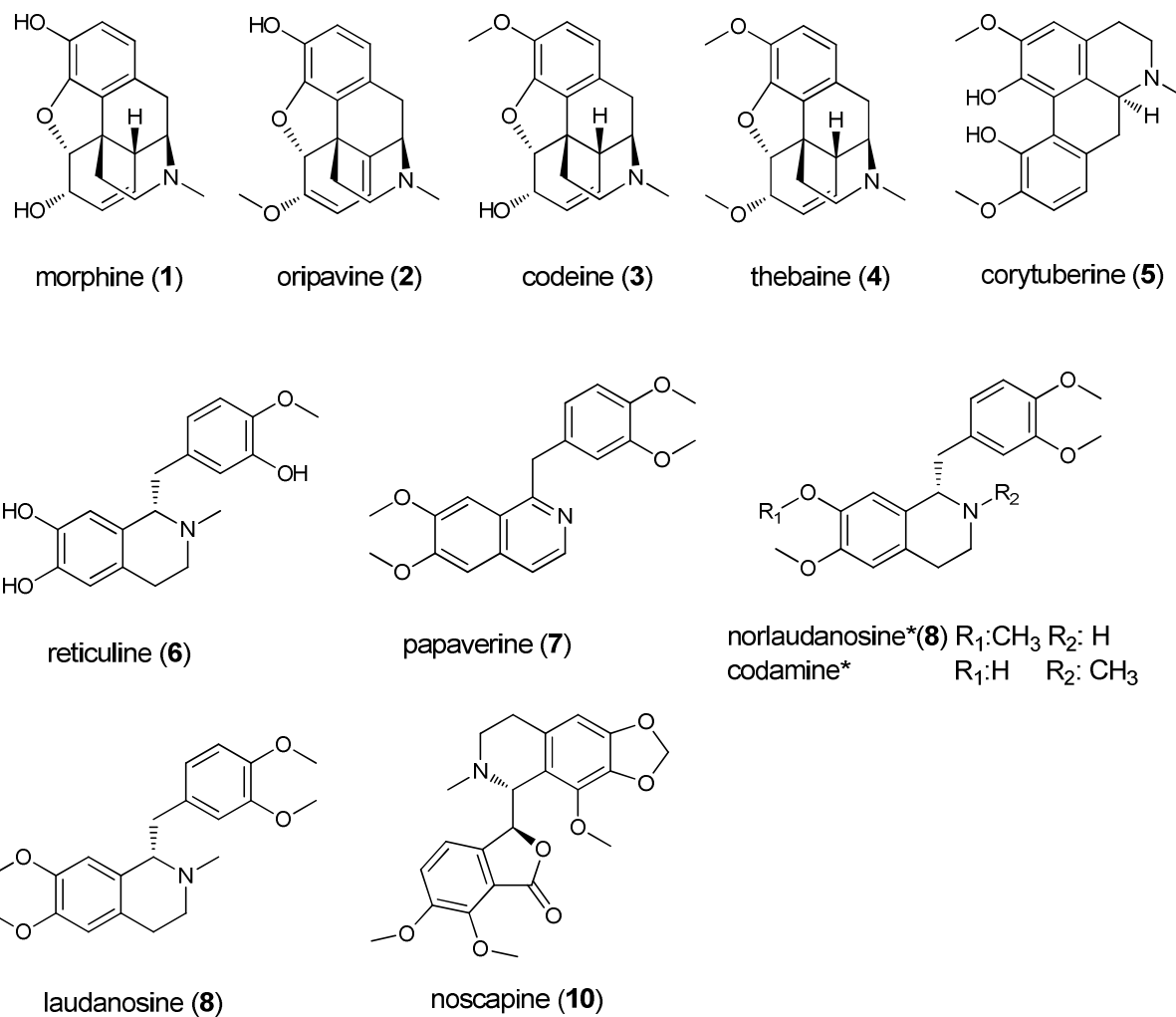


Figure 1. Structures of opiates that have been confirmed by their molecular formulae. Both norlaudanosiine and codamine ($C_{20}H_{25}NO_4$) are reported constituents of *P. somniferum*,¹⁴ but as constitutional isomers cannot be distinguished by their quasi-molecular ions.

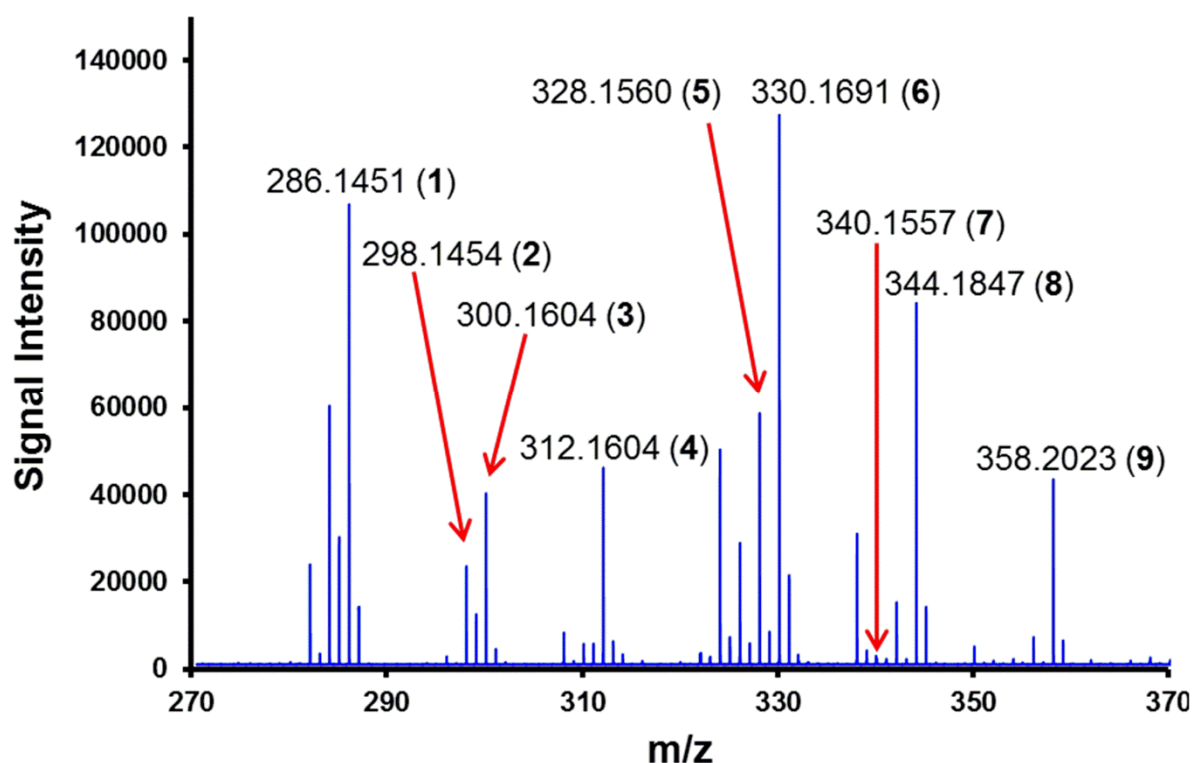


Figure 2. High resolution LDI-MS spectrum obtained from the crude methanolic extract of sample 3. The following alkaloids were detected and confirmed by their molecular formulae: Morphine (1), oripavine (2), codeine (3), thebaine (4), corytuberine (5) reticuline (6), papaverine (7), codamine and/or norlaudanosi* (8) and laudanosi (9). Any compound was detected by their quasi-molecular ions $[M+H]^+$. A comprehensive summary of all confirmed alkaloids in all samples is provided in Table 1. Further HR spectra of all extracts are provided in the Supporting Information section (Figure S5 A-E).

131 **Table 1.** High resolution LDI-MS performed on samples 1-5

name	molecular formula	calculated mass [M+H] ⁺	observed mass [M+H] ⁺	mass error (Da)	mass error (ppm)	data from sample	Opiates detected in sample				
							1	2	3	4	5
morphine (1)	C ₁₇ H ₁₉ NO ₃	286.1443	286.1437	-0.0006	-2.1	1	✓	✓	✓	✓	✓
oripavine (2)	C ₁₈ H ₁₉ NO ₃	298.1443	298.1435	-0.0008	-2.7	1	✓	✓	✓	✓	✓
codeine (3)	C ₁₈ H ₂₁ NO ₃	300.1600	300.1596	-0.0004	-1.3	1	✓	✓	✓	✓	✓
thebaine (4)	C ₁₉ H ₂₁ NO ₃	312.1600	312.1590	-0.0010	-3.2	1	✓	✓	✓	✓	✓
corytuberine (5)	C ₁₉ H ₂₁ NO ₄	328.1549	328.1536	-0.0013	-4.0	1	✓	✓	✓	✓	✓
reticuline (6)	C ₁₉ H ₂₃ NO ₄	330.1705	330.1691	0.0014	-4.2	3	✓	✓	✓	✓	✓
papaverine (7)	C ₂₀ H ₂₁ NO ₄	340.1548	340.1550	0.0002	0.6	1	✓	✓	✓	✓	✓
norlaudanosi* (8) codamine*	C ₂₀ H ₂₅ NO ₄	344.1862	344.1847	-0.0015	-4.4	3	✓	✓	✓	✓	✓
laudanosi (9)	C ₂₁ H ₂₇ NO ₄	358.2018	358.2001	-0.0017	-4.7	3	✓	n.d.	✓	✓	✓
noscapi (10)	C ₂₂ H ₂₃ NO ₇	414.1552	414.1536	-0.0016	-3.9	1	✓	✓	n.d.	n.d.	n.d.

132 ✓ detected, n.d. not detected (S/N<10). *Constitutional isomers reported for *P. somniferum*.¹⁴

133

134 **Table 2.** Comparison of results from LC-UV (230 nm), LC-MS and HR-LDI-MS experiments

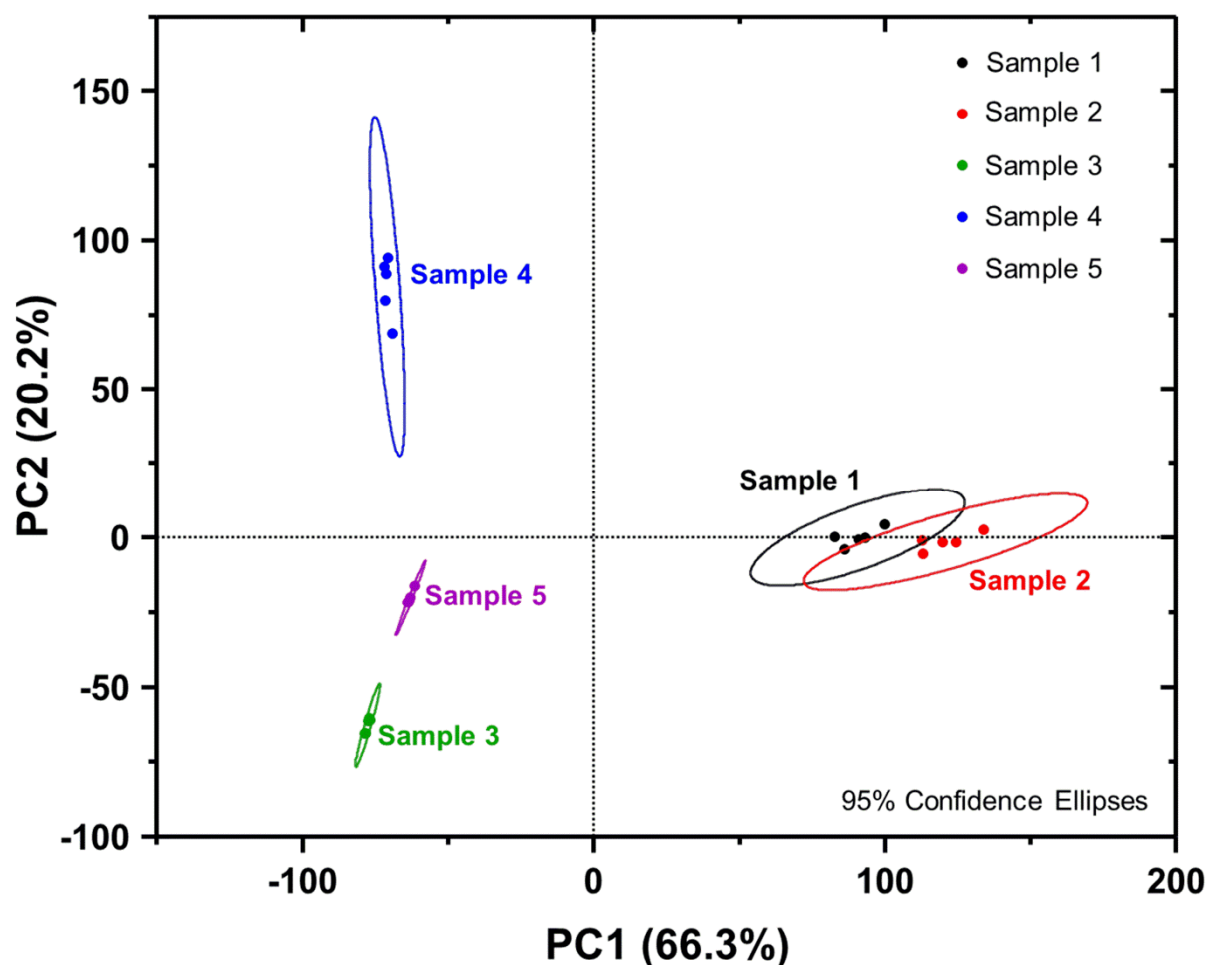
compound	sample 1			sample 2			sample 3			sample 4			sample 5		
	LC-UV	LC-MS	LDI-MS	LC-UV	LC-MS	LDI-MS	LC-UV	LC-MS	LDI-MS	LC-UV	LC-MS	LDI-MS	LC-UV	LC-MS	LDI-MS
morphine (1)	✓	✓	✓	✓	✓	✓	✓	✓	✓	✓	✓	✓	✓	✓	✓
oripavine (2)	✓	✓	✓	✓	✓	✓	n.d.	✓	✓	✓	✓	✓	✓	✓	✓
codeine (3)	✓	✓	✓	✓	✓	✓	✓	✓	✓	✓	✓	✓	✓	✓	✓
thebaine (4)	co	✓	✓	co	✓	✓	co	✓	✓	co	✓	✓	co	✓	✓
corytuberine (5)	✓	✓	✓	✓	✓	✓	✓	✓	✓	✓	✓	✓	n.d.	✓	✓
reticuline (6)	✓	✓	✓	✓	✓	✓	✓	✓	✓	✓	✓	✓	✓	✓	✓
papaverine (7)	co	✓	✓	co	✓	✓	co	✓	✓	co	n.d.	✓	co	n.d.	✓
norlaudanosi*ne (8)	✓	✓	✓	✓	✓	✓	✓	✓	✓	✓	✓	✓	✓	✓	✓
codamine*															
laudanosi*ne (9)	✓	✓	✓	n.d.	✓	n.d.	✓	✓	✓	✓	✓	✓	✓	✓	✓
noscapine (10)	✓	✓	✓	✓	✓	✓	✓	✓	n.d.	✓	✓	n.d.	n.d.	n.d.	n.d.

135 Except for noscapine (**10**) (sample 3 and 4) and laudanosi*ne (**9**) (sample 2), HR-LDI-MS detected any of the compounds observed by LC-UV-
 136 MS. On the other hand, papaverine (**7**) was exclusively detected by LDI-MS in sample 4 and 5. A comprehensive summary of all LC-UV-MS
 137 chromatograms is given in the Supporting Information.

With regards to common laboratory practices, the analysis of opiates is mostly performed by methods such as GC-MS, HPLC-UV and LC-UV-MS.⁵⁻⁹ One major advantage of these hyphenated methods is, that complex mixtures undergo chromatographic separation before entering UV or MS detectors. Consequently constituents are individually ionized, or, in case of co-elution, as mixtures of very few compounds. With respect to LDI, the situation is completely different, as all compounds concurrently compete in the ionization process. This may induce so called “analyte suppression effects” (ASE). Initially described for the MALDI process,¹⁶⁻¹⁸ ASE may probably occur in matrix free LDI too, as both methods share similar ionization mechanisms. In order to address this issue and to compare LDI-MS to classical analytical approaches, all samples were systematically analyzed by LC-UV-MS and results are summarized in Table 2. Except for the minor alkaloid noscapine (sample 3, 4) and trace amounts of laudanosine (**9**) in sample 2, LDI-MS detected any compound observed by LC-MS. On the other hand, solely LDI-MS permitted the detection of papaverine in samples 4 and 5. Compared to LC-UV, both LC-MS and LDI-MS exhibited higher sensitivity and were not impacted by the co-elution of papaverine and thebaine observed under given chromatographic conditions. A comprehensive summary of all LC-UV-MS experiments is provided in the Supporting Information (file: LC-UV-MS data).

With regards to sample processing, LDI-MS did not require any sample pre-conditioning or method optimization steps and yielded instant results. While the automated acquisition of a cumulative LDI spectrum was accomplished within fifty seconds, forty-two minutes were required for an LC-UV-MS experiment. Moreover LDI-MS permitted the use of any solvent for sample solubilization and yielded distinct fingerprint spectra with highly specific relative signals intensity ratios for each sample. (Figure S3 and S4) These findings confirm results previously described for phenolic compounds, which are discussed in detail in the original publication.¹³

Concluding the experimental approach, a PCA based on LDI-MS data was performed. Results from this experiment are summarized in Figure 3 and show the correct grouping of all samples according to their chemical composition. As outlined in the Material and Methods section, samples were deposited in quintuplicates, so each data point represent one cumulative spectrum of 300 laser shots randomly acquired from one sample deposition spot. All data points of all samples were located within the 95% ellipse of confidence, confirming the robustness of the method. This is once more in line with previous observations made for phenolic compounds.¹³ Data points of sample 1 and 2 are located rather closely in the PCA with some overlay of their ellipses of confidence, suggesting a similar chemical composition. This also confirms the visual impression observed when looking at single spectra of these samples (Figure S1 and S2 Supporting information).



175

176 **Figure 3.** Principal component analysis of poppy samples 1-5 based on their LR LDI-MS
 177 spectra. Samples were analyzed in quintuplicates and each data point represent one
 178 cumulative spectrum of 300 laser shots that were randomly acquired from ten different
 179 locations of one sample spot.

180 For the time being very little is known about the ionization of opiates by laser desorption.
 181 Some reports describe the MALDI detection of morphine from bodily fluids, protein
 182 conjugates and pharmaceutical preparations,¹⁹⁻²¹ as well as from a mono-component
 183 solution²² and TLC surfaces.²³ Like LDI, MALDI yields instant results and may even provide
 184 increased sensitivity. On the other hand MALDI is inevitably linked to the formation of
 185 matrix ions in the low mass region, which may easily superpose analyte signals and prevent
 186 correct spectra interpretation. In addition, redundant matrix ions do severely impair statistical

separation by PCA. Bypassing the problem of matrix interference, surface assisted LDI (SALDI) is commonly used for detecting small molecules. The method replaces the matrix by nanotextured materials such as silicon or various specifically structured metal surfaces in order to assist the ionization process. With respect to opiates, one report describes the use of carbon nano-coatings for inducing LDI of papaverine.²⁴ However present results have shown that opiates do sufficiently ionize by simple laser irradiation and without the support of any nano-textured material or surface.

In summary the present work has discussed the inherent LDI properties of morphinan and benzyloquinoline alkaloids as well as their simultaneous detection from crude extracts of *P. somniferum*. Permitting the detection of ten opiates by their molecular formulae, results from LDI-MS were comparable with those obtained by LC-MS. Moreover, all poppy samples exhibited highly specific “fingerprint” spectra allowing their unambiguous identification as well as their discrimination by PCA. Facilitating an automated and rapid qualitative analysis of large sample batches, LDI-MS may provide an interesting analytical tool for industrial application.

203 ABBREVIATIONS:

204	APCI	Atmospheric Pressure Chemical Ionization
205	ASE	Analyte Suppression Effects
206	ESI	Electro Spray Ionization
207	HPLC	High Performance Liquid Chromatography
208	LC-MS	Liquid Chromatography coupled with Mass Spectrometry
209	LDI-MS	Laser Desorption Ionization coupled with Mass Spectrometry
210	MALDI	Matrix Assisted Laser Desorption Ionisation
211	PCA	Principle Component Analysis
212	TOF	Time of Flight
213	UV	Ultra Violet (used for absorption chromatograms in combination with HPLC)

214 ACKNOWLEDGEMENT:**215 SUPPORTING INFORMATION:**

216 Low (Figures S1-S3) and high resolution (Figure S5 A-E) LDI-MS spectra, as well as a
217 detailed summary of extraction yields (Table S1) are provided for samples 1-5. Further a
218 detailed analysis of the repeatability of LDI-MS experiments is given (Figure S3, S4). A
219 complete summary of all LC-UV-MS experiments conducted on samples 1-5 is provided as
220 well. Finally, original, high resolution LDI-MS spectrum files of samples 1-5 were exported.
221 These files can be opened and analyzed with mMass (freeware).

222

223 REFERENCES

- 224 1. Knutsen, H.K.; Alexander, J; Barregård, L.; Bignami, M.; Brüschweiler, B.;
225 Ceccatelli, S.; Cottrill, B.; Dinovi, M.; Edler, L.; Grasl-Kraupp, B.; Hogstrand, C.;
226 Hoogenboom, L.R.; Nebbia, C.S.; Oswald, I.P.; Petersen, A.; Rose, M.; Roudot, A.C.;
227 Schwerdtle, T.; Vollmer, G.; Wallace, H.; Benford, D.; Calò, G.; Dahan, A.; Dusemund, B.;
228 Mulder, P.; Németh-Zámboriné, E.; Arcella, D.; Baert, K.; Cascio, C.; Levorato, S.; Schutte,
229 M.; Vleminckx, C. Update of the Scientific Opinion on opium alkaloids in poppy seeds.
230 *EFSA J* **2018**, *16*, e05243.
- 231 2. Weintraub, M.; Moscucci, M. Taste preference for cough syrups: a comparative study
232 of three codeine-containing medications. *Clin Ther* **1986**, *8*, 348-353.
- 233 3. Matoba, M. Use of morphine and adjuvant drugs according to the condition. *Eur J*
234 *Pain* **2001**, *5 Suppl A*, 59-62.
- 235 4. Kimoto, Y.; Kessler, R. Constantinou, C.E. Relaxation mechanisms of antispasmodics
236 papaverine and thiphenamil on the human corpus cavernosum. *J Urol* **1990**, *144*, 1497-1499.
- 237 5. Acevska, J.; Stefkov, G.; Petkovska, R.; Kulevanova, S.; Dimitrovska, A.
238 Chemometric approach for development, optimization, and validation of different
239 chromatographic methods for separation of opium alkaloids. *Anal Bioanal Chem* **2012**, *403*,
240 1117-1129.
- 241 6. Yoshimatsu, K.; Kiuchi, F.; Shimomura, K.; Makino, Y. A rapid and reliable solid-
242 phase extraction method for high-performance liquid chromatographic analysis of opium
243 alkaloids from papaver plants. *Chem Pharm Bull* **2005**, *53*, 1446-1450.
- 244 7. Sproll, C.; Perz, R.C.; Lachenmeier, D.W. Optimized LC/MS/MS analysis of
245 morphine and codeine in poppy seed and evaluation of their fate during food processing as a
246 basis for risk analysis. *J Agric Food Chem* **2006**, *54*, 5292-5298.

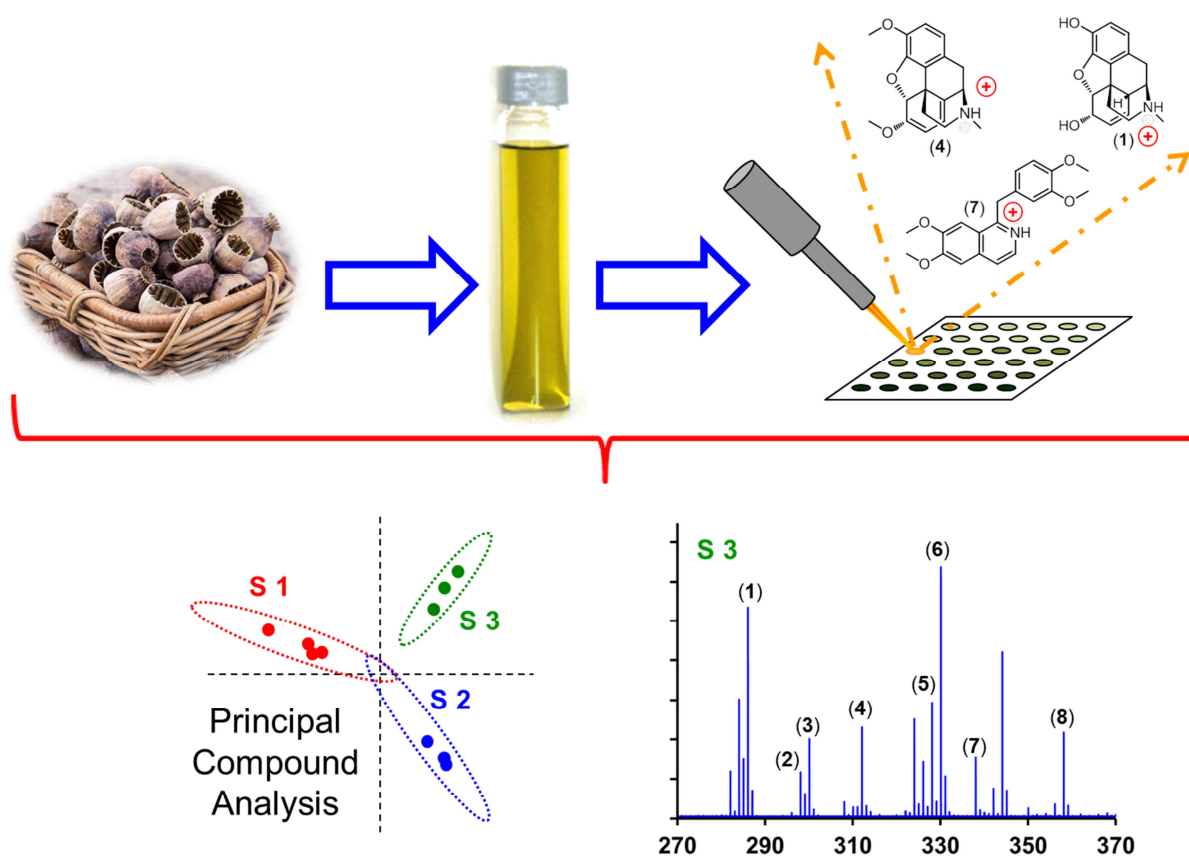
- 247 8. López, P.; Pereboom-de Fauw, D.P.K.H.; Mulder, P.P.J.; Spanjer, M.; de Stoppelaar,
248 J.; Mol, H.G.J.; de Nijs, M. Straightforward analytical method to determine opium alkaloids
249 in poppy seeds and bakery products. *Food Chem* **2018**, *242*, 443-450.
- 250 9. Liu, C.; Hua, Z.; Bai, Y. Classification of Opium by UPLC-Q-TOF Analysis of
251 Principal and Minor Alkaloids. *J Forensic Sci* **2016**, *61*, 1615-1621.
- 252 10. Rohmer, M.; Meyer, B.; Mank, M.; Stahl, B.; Bahr, U.; Karas, M. 3-Aminoquinoline
253 acting as matrix and derivatizing agent for MALDI MS analysis of oligosaccharides. *Anal*
254 *Chem* **2010**, *82*, 3719-3726.
- 255 11. Mohr, M.D.; Börnsen, K.O.; Widmer, H.M. Matrix-assisted laser
256 desorption/ionization mass spectrometry: Improved matrix for oligosaccharides. *Rapid*
257 *Commun Mass Spectrom* **1995**, *9*, 809-814.
- 258 12. Strohalm, M.; Kavan, D.; Novák, P.; Volný M.; Havlíček, V. mMass 3: a cross-
259 platform software environment for precise analysis of mass spectrometric data. *Anal Chem*
260 **2010**, *82*, 4648-4651.
- 261 13. Schinkovitz, A.; Boisard, S.; Freuze, I.; Osuga, J.; Mehlmer, N.; Brück, T.; Richomme
262 P. Matrix-free laser desorption ionization mass spectrometry as a functional tool for the
263 analysis and differentiation of complex phenolic mixtures in propolis: a new approach to
264 quality control. *Anal Bioanal Chem* **2018**, *410*, 6187–6195.
- 265 14. Dang, T.T.; Facchini, P.J. Characterization of three O-methyltransferases involved in
266 noscapine biosynthesis in opium poppy. *Plant Physiol* **2012**, *159*, 618-31.
- 267 15. Cuimei, L.; Zhendong, H.; Yanping, B. Classification of Opium by UPLC-Q-TOF
268 Analysis of Principal and Minor Alkaloids. *J Forensic Sci* **2016**, *61*, 1615-1621.
- 269 16. Lou, X.; van Dongen, J.L.J.; Milroy, L.G.; Meijer, E.W. Generation of gas-phase ions
270 from charged clusters: an important ionization step causing suppression of matrix and analyte

- ions in matrix-assisted laser desorption/ionization mass spectrometry. *Rapid Commun Mass Spectrom* **2016**, *24*, 2628-2634.
17. Knochenmuss, R. Ion formation mechanisms in UV-MALDI. *Analyst* **2006**, *131*, 996-986.
18. McCombie, G.; Knochenmuss, R. Small-Molecule MALDI using the Matrix Suppression Effect to reduce or eliminate matrix background interferences. *Anal Chem* **2004**, *76*, 4990-4997.
19. Shoyama, Y.; Fukada, T.; Tanaka, T.; Kusai, A.; Nojima, K. Direct determination of opium alkaloid-bovine serum albumin conjugate by matrix-assisted laser desorption/ionization mass spectrometry. *Biol Pharm Bull* **1993**, *16*, 1051-1053.
20. Ho, Y.C.; Tseng, M.C.; Lu, Y.W.; Lin, C.C.; Chen, Y.J.; Fuh, M.R. Nanoparticle-assisted MALDI-TOF MS combined with seed-layer surface preparation for quantification of small molecules. *Anal Chim Acta* **2011**, *697* (1-2), 1-7.
21. Brondz, I.; Brondz, A. Supercritical Fluid Chromatography-Mass Spectrometry (SFC-MS) and MALDI-TOF-MS of Heterocyclic Compounds with Trivalent and Pentavalent Nitrogen in Cough Relief Medical Forms Tuxi and Cosylan. *Am J Anal Chem* **2012**, *3*, 870-876.
22. Schinkovitz, A.; Kenfack, G.T.; Seraphin, D.; Levillain, E.; Dias, M.; Richomme, P. Selective detection of alkaloids in MALDI-TOF: the introduction of a novel matrix molecule. *Anal Bioanal Chem* **2012**, *403*, 1697-1705.
23. Kuwayama, K.; Tsujikawa, K.; Miyaguchi, H.; Kanamori, T.; Iwata, Y.T.; Inoue, H. Rapid, simple, and highly sensitive analysis of drugs in biological samples using thin-layer chromatography coupled with matrix-assisted laser desorption/ionization mass spectrometry. *Anal Bioanal Chem* **2012**, *402*, 1257-1267.

295 24. Kosyakov, D.S.; Sorokina, E.A.; Ul'yanovskii, N.V.; Varakin, E.A.; Chukhchin, D.G.;
 296 Gorbova, N.S. Carbon nanocoatings: A new approach to recording mass spectra of low-
 297 molecular compounds using surface-assisted laser desorption/ionization mass spectrometry. *J*
 298 *Anal Chem* **2016**, *71* (13), 1221-1227.

299

300

301 **GRAPHIC FOR TABLE OF CONTENTS:**302 **Original.**

303

304 **Resized according to the journal's requirements.**

